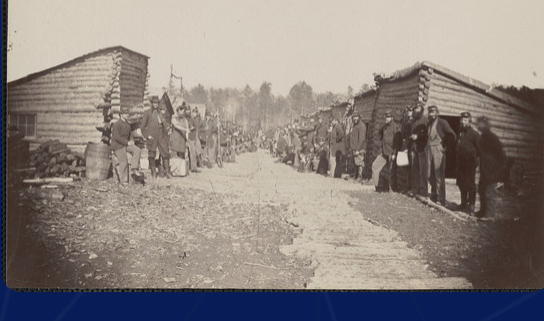




## BLUE AND GRAY EDUCATION SOCIETY

# GREAT PHOTOGRAPHY HUNT

Check out the results from last week's Medford Photo #57, then scroll down to see this week's mystery Medford Photo #58—and email us what you know!



A company street in winter quarters

### Medford Photo #57

The Medford files identify this photo as "A company street in winter quarters."

The info on this one is a little sparse, but one of our cohorts adds additional details: "This photo of winter quarters was taken by Mathew Brady on January 1, 1863."

Correction: In last week's edition of the BGES Great Photography Hunt, #56 was mistakenly identified as being taken in May 1882. The correct date is May 1862.

## Medford Photo #58

May 5, 2021, [blueandgrayeducation.org](http://blueandgrayeducation.org)



Tell us what you know! Who or what is it? Where is it? When is it? Where is the original image housed?

Respond [here](#).

Results will be published next week in [this Dispatch](#).



[Learn More About BGES](#)

### What is the Medford Collection?

*In the late 19th century, Gen. Samuel C. Lawrence collected photographic images like we used to collect baseball cards. It was his passion, and whenever copies were presented or opportunities existed to grow his collection, he collected—nearly 3,700 images. Most are familiar to us—Lawrence did not acquire images shot entirely or exclusively for him. Thus what we know is that the original and countless copies exist around the world.*

*Lawrence was able to identify some and marked them accordingly. Some no doubt were misidentified, while others were unknown to him. In partnership with the [Medford Historical Society & Museum](#), BGES would like to put the spotlight on these timeless looks at the past and provide Medford with additional meaningful information about its collection. You can help by joining BGES's GREAT PHOTOGRAPHY HUNT: REVEALING THE TRUE STORY.*

*We want to hear from you the answers to the great four questions: Who or What is this? Where is this? When was this? Where is the original of this?*

*You can reply to this Dispatch with what you know. We will compile and evaluate the answers and forward credible information to the Medford Historical Society.*

*We know that you know or you know someone who knows!*

*Now we all want to know.*

For a look at additional images for examination and comment, [click here](#).

Medford Photo Provenance Project Dispatch is published every Wednesday. This is an active project in conjunction with the Medford Historical Society and is an effort to improve the provenance and documentation of their collection. Lacking a staff expertise in the Civil War and photography, they are counting on the Civil War, historical, and photographic communities to help them fill in the empty spaces. With over 3,600 images, the project is a longterm one. In addition to these weekly releases, BGES will be posting 15 additional images at their website for examination and comment. The posting will change monthly, allowing us to showcase over 200 images a year.

[Click here to go to the BGES website posting.](#)

Copyright © BGES 2020

Established in 1994, BGES is a small but active nonprofit and tax-exempt Civil War educational group. It has a long list of completed projects and has others in addition to this that are underway or planned. It is supported by donations from its members and the general public. Membership is open to all.

[Learn More About BGES](#)

Share this email:



[Manage](#) your preferences | [Opt out](#) using TrueRemove™

Got this as a forward? [Sign up](#) to receive our future emails.

View this email [online](#).

P.O. Box 1176  
Chatham, VA | 24531 US

This email was sent to .  
To continue receiving our emails, add us to your address book.

emma

[Subscribe](#) to our email list.